

Zone of Theoretical Visibility (ZTV) has been generated using Environment Agency 1m LiDAR Digital Terrain Model (DTM). The DTM was resampled to a cell size of 2m. These models do not take into account the screening effect of vegetation and buildings and other structures. Existing buildings have been incorporated into the DTM from OS Open Map Local with an assumed height of 8m. Woodland has been incorporated into the DTM from the National Tree Map (NTM) based upon the mean height of individual tree canopies, which is accurate to +/- 1m. The ZTV is based upon a grid of points at 50m intervals within the Energy Park Site, where a 5m maximum development height has been assumed, with an observer eye height of 1.6m. All heights mentioned are Above Ground Level (AGL), unless otherwise specified.

# AECOM

## PROJECT

Shepway Energy Park

## CLIENT

SSE Newchurch Solar Limited

## CONSULTANT

AECOM Limited  
Midpoint,  
Alencon Link  
Basingstoke, RG21 7PP  
www.aecom.com

## LEGEND

- Energy Park Site
- Interconnecting Cable Corridor Search Area
- 5km Buffer of the Energy Park Site - Extent of ZTV Analysis
- Solar Farm Extent - Assumed Development Height of 5m
- Existing Building / Structure - Assumed Height 8m
- Existing Woodland - Mean Height taken from National Tree Map (NTM)
- Area not Included in ZTV Analysis

## Zone of Theoretical Visibility (ZTV) - Degree of Maximum Visibility

- 1 - 10%
- 11 - 20%
- 21 - 30%
- 31 - 40%
- 41 - 50%
- 51 - 60%
- 61 - 70%
- 71 - 80%
- 81 - 90%
- 91 - 100%

## NOTES

Reproduced from Ordnance Survey digital map data © Crown copyright 2025. All rights reserved. Licence number AC0000808122. © Crown copyright material is reproduced with the permission of Land Registry under delegated authority from the Controller of HMSO. This material was last updated in 2024 and may not be copied distributed, sold or published without the formal permission of Land Registry. Only an official copy of a title plan or register obtained from the Land Registry may be used for legal or other official purposes.  
© Environment Agency copyright and/or database right 2022. All rights reserved.  
National Tree Map – © Bluesky International Limited.

## ISSUE PURPOSE

Scoping Report

## PROJECT NUMBER

60736659

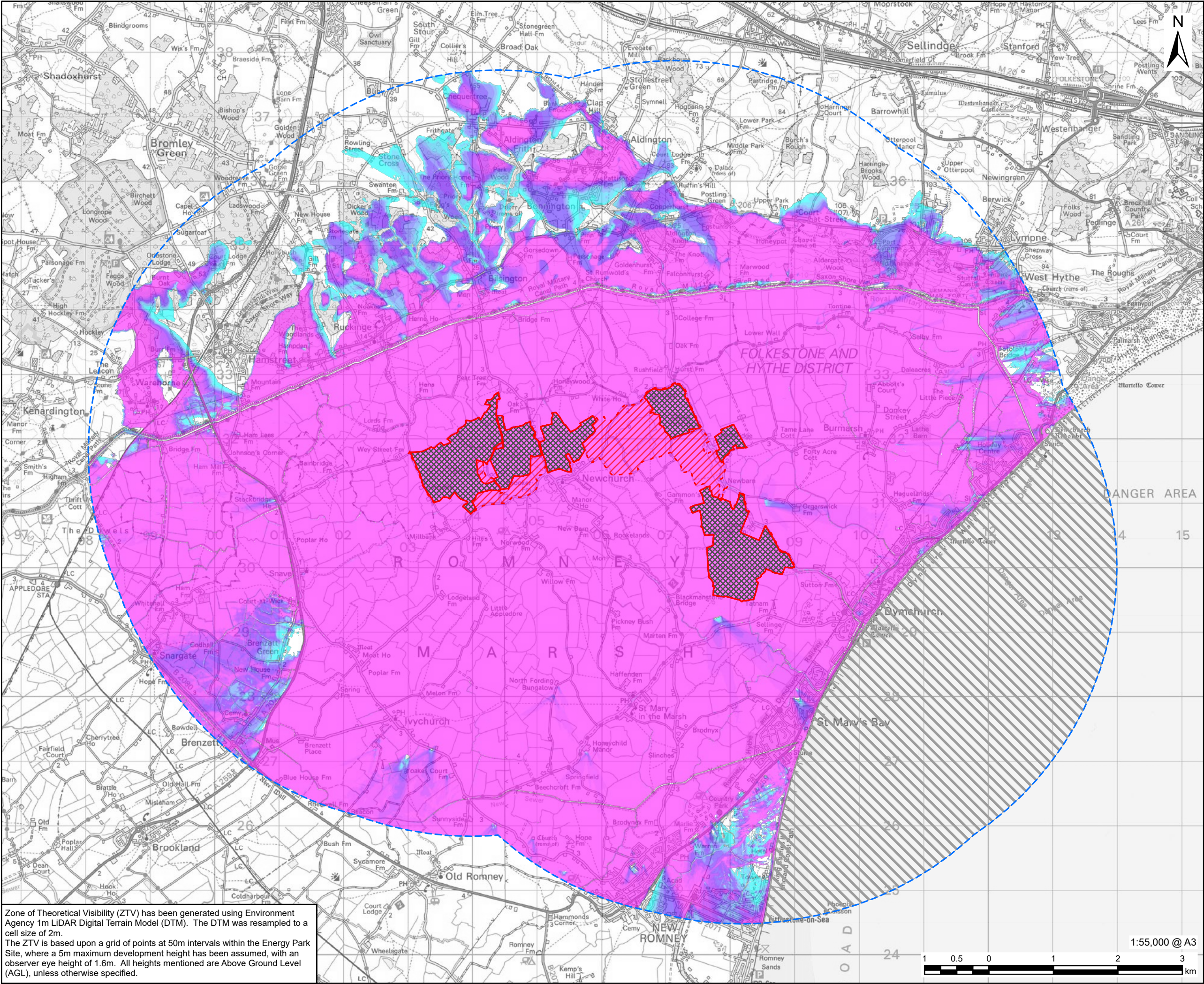
## FIGURE TITLE

Zone of Theoretical Visibility (Screened): Site 6

## FIGURE NUMBER

Figure 9-1g





**AECOM**

PROJECT

Shepway Energy Park

CLIENT

SSE Newchurch Solar Limited

CONSULTANT

AECOM Limited  
Midpoint,  
Alencon Link  
Basingstoke, RG21 7PP  
www.aecom.com

LEGEND

- Energy Park Site
- Interconnecting Cable Corridor
- Search Area
- 5km Buffer of the Energy Park Site - Extent of ZTV Analysis
- Solar Farm Extent - Assumed Development Height of 5m
- Area not Included in ZTV Analysis

**Zone of Theoretical Visibility (ZTV) - Degree of Maximum Visibility**

- 1 - 10%
- 11 - 20%
- 21 - 30%
- 31 - 40%
- 41 - 50%
- 51 - 60%
- 61 - 70%
- 71 - 80%
- 81 - 90%
- 91 - 100%

**NOTES**

Reproduced from Ordnance Survey digital map data © Crown copyright 2025. All rights reserved. Licence number AC0000808122. © Crown copyright material is reproduced with the permission of Land Registry under delegated authority from the Controller of HMSO. This material was last updated in 2024 and may not be copied distributed, sold or published without the formal permission of Land Registry. Only an official copy of a title plan or register obtained from the Land Registry may be used for legal or other official purposes. © Environment Agency copyright and/or database right 2022. All rights reserved.

**ISSUE PURPOSE**

Scoping Report

**PROJECT NUMBER**

60736659

**FIGURE TITLE**

Zone of Theoretical Visibility (Bare Earth): Sites 1 to 6

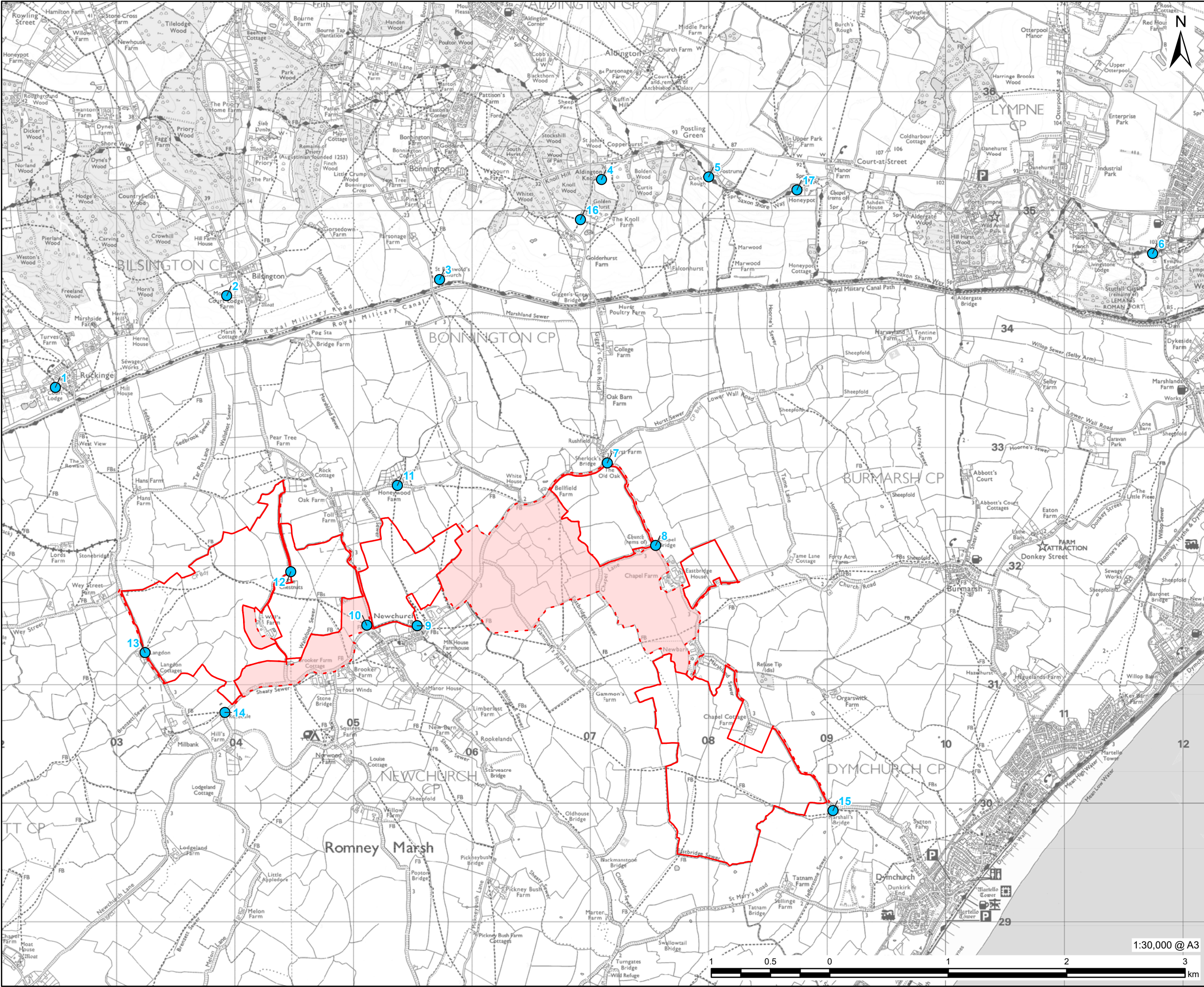
**FIGURE NUMBER**

Figure 9-1h



**Figure 9-2: Proposed LVIA Viewpoint Locations**





This drawing has been prepared for the use of AECOM's client. It may not be used, modified, reproduced or relied upon by third parties, except as agreed by AECOM or as required by law. AECOM accepts no responsibility, and denies any liability whatsoever, to any party that uses or relies on this drawing without AECOM's express written consent. Do not scale this document. All measurements must be obtained from the stated dimensions.

# AECOM

PROJECT

Shepway Energy Park

CLIENT

SSE Newchurch Solar Limited

CONSULTANT

AECOM Limited  
Midpoint,  
Alencon Link  
Basingstoke, RG21 7PP  
www.aecom.com

LEGEND

- Energy Park Site
- Interconnecting Cable Corridor Search Area
- Proposed Viewpoint Location

NOTES

Reproduced from Ordnance Survey digital map data © Crown copyright 2025. All rights reserved. Licence number AC0000808122. © Crown copyright material is reproduced with the permission of Land Registry under delegated authority from the Controller of HMSO. This material was last updated in 2024 and may not be copied distributed, sold or published without the formal permission of Land Registry. Only an official copy of a title plan or register obtained from the Land Registry may be used for legal or other official purposes.

ISSUE PURPOSE

Scoping Report

PROJECT NUMBER

60736659

FIGURE TITLE

Proposed LVIA Viewpoint Locations

FIGURE NUMBER

Figure 9-2



**Figure 9-3: Landscape Designations**